

CONFORMITY STATEMENT



<http://www.telindus.com/accessproducts>
> Products > Choose a product > Download certificates



Hereby, TELINDUS declares that this TELINDUS 1110/1111 ADSL BRIDGE, 1120/1121 ADSL ROUTER is in compliance with the essential requirements and other relevant provisions of Directive 1999/5/EC



Bij deze verklaart TELINDUS dat deze TELINDUS 1110/1111 ADSL BRIDGE, 1120/1121 ADSL ROUTER in overeenstemming is met de essentiële vereisten en andere relevante bepalingen van Richtlijn 1999/5/EC.



Par la présente, TELINDUS déclare que ce TELINDUS 1110/1111 ADSL BRIDGE, 1120/1121 ADSL ROUTER est en conformité avec les exigences essentielles et autres articles applicables de la Directive 1999/5/EC.



Hiermit, TELINDUS erklärt daß dieser TELINDUS 1110/1111 ADSL BRIDGE, 1120/1121 ADSL ROUTER in Fügbarkeit ist mit den wesentlichen Anforderungen und anderen relevanten Bereitstellungen von Direktive 1999/5/EC



Mediante la presente, TELINDUS declara que el TELINDUS 1110/1111 ADSL BRIDGE, 1120/1121 ADSL ROUTER cumple con los requisitos esenciales y las demás prescripciones relevantes de la Directiva



A TELINDUS declara que o TELINDUS 1110/1111 ADSL BRIDGE, 1120/1121 ADSL ROUTER cumpre os principais requisitos e outras disposições da Directiva 1999/5/EC.



Col presente, TELINDUS dichiara che questo TELINDUS 1110/1111 ADSL BRIDGE, 1120/1121 ADSL ROUTER è in acquiescenza coi requisiti essenziali e stipulazioni attinenti ed altre di Direttivo 1999/5/EC.



Με το παρόν, η TELINDUS δηλώνει ότι αυτό το TELINDUS 1110/1111 ADSL BRIDGE, 1120/1121 ADSL ROUTER είναι συμμορφούμενο με τις βασικές απαιτήσεις και με τις υπόλοιπες σχετικές διατάξεις της οδηγίας 1999/5/EC.

SAFETY INSTRUCTIONS



IMPORTANT SAFETY INSTRUCTIONS

Unplug the unit from the wall power outlet before installing, adjusting or servicing.



ACHTUNG! WICHTIGE SICHERHEITSINSTRUKTIONEN

Vor sämtlichen Arbeiten am Gerät (Installation, Einstellungen, Reparaturen etc.) sollten Sie den Netzstecker aus der Steckdose ziehen.



SAFETY WARNING

To avoid damage to the equipment, please observe all procedures described in this chapter.



SICHERHEITSBESTIMMUNGEN

Um eine Beschädigung des Gerätes zu verhindern, beachten Sie bitte unbedingt die Sicherheitsbestimmungen, die in diesem Abschnitt beschrieben werden.

Ensure that the unit and its connected equipment all use the same AC power and ground, to reduce noise interference and possible safety hazards caused by differences in ground or earth potentials.

UNPACKING

Rough handling during shipping causes most early failures. Before installation, check the shipping carton for signs of damage:

If the carton box is damaged, please place a claim with the carrier company immediately.

If the carton box is undamaged, do not dispose of it in case you need to store the unit or ship it in the future.



WARNING

Always place the unit on its feet without blocking the air vents.

Do not stack multiple units directly onto each other, as stacking can cause heat build-up that could damage the equipment.



ACHTUNG

Stellen Sie das Gerät niemals seitlich, sondern nur auf den Füßen auf und achten Sie darauf, daß die Lüftungsschlitze an der Seitenverkleidung frei bleiben.

Stapeln Sie nicht mehrere Geräte direkt übereinander, dies kann zu einem Hitzestau führen.

Quick Setup

TELINDUS®
11XX ADSL Series

www.telindus.com

Use this Quick Setup to install the following Telindus Products:

- 1110 ADSL Bridge
- 1111 ADSL Bridge
- 1120 ADSL Router
- 1121 ADSL Router

COPY RIGHT NOTICE

The information and descriptions contained in this publication are the property of Telindus. Such information and descriptions must not be copied or reproduced by any means, or disseminated or distributed without the express prior written permission of Telindus.

DISCLAIMER

This publication could include technical inaccuracies or typographical errors, for which Telindus never can or shall be held liable. Changes are made periodically to the information herein; these changes will be incorporated in new editions of this publication. Telindus may make improvements and/or changes in the product(s) described in this publication at any time, without prior notice.

SAFETY WARNING

Always observe standard safety precautions during installation, operation and maintenance of this product. Only qualified and authorized service personnel should carry out adjustment, maintenance or repairs to this instrument. Either the operator or the user should perform no adjustment, maintenance or repairs.

The interfaces on the *Telindus 1110/1111 ADSL Bridge* should only be connected to circuit types as listed below:

INTERFACE	CONNECTOR	CIRCUIT
• Line Interface	RJ11	TNV-1
• LAN Interface	RJ45	SELV
• USB Interface	Type-A USB	Connector SELV

The interfaces on the *Telindus 1120/1121 ADSL Router* should only be connected to circuit types as listed below:

INTERFACE	CONNECTOR	CIRCUIT
• Line Interface	RJ11	TNV-1
• LAN Interface	RJ45	SELV

Carefully read the safety instructions on the full manual that is included on the CD.

YOUR FEEDBACK

Your satisfaction about this purchase is an extremely important priority to all of us at Telindus. Accordingly, all electronic, functional and cosmetic aspects of this new unit have been carefully and thoroughly tested and inspected. If any fault is found with this unit or should you have any other quality-related comment concerning this delivery, please submit the Quality Comment Form on our web page <http://www.telindus.com/accessproducts>.

FCC STATEMENT

This equipment has been tested and found to comply with the limits for a class B digital device, pursuant to Part 15 of the FCC rules. These limits are designed to provide reasonable protection against harmful interference in a residential installation. This equipment generates, uses and can radiate radio frequency energy and, if not installed and used in accordance with the instructions, may cause harmful interference to radio communications. However, there is no guarantee that interference will not occur in a particular installation. If this equipment does cause harmful interference to radio or television reception, which can be determined by turning the equipment off and on, the user is encouraged to try to correct the interference by one or more of the following measures:

- Reorient or relocate the receiving antenna.
- Increase the separation between the equipment and receiver.
- Connect the equipment into an outlet on a circuit different from that to which the receiver is connected.
- Consult the dealer or an experienced radio/TV technician for help.

You are cautioned that changes or modifications not expressly approved by the party responsible for compliance could void your authority to operate the equipment.

This device complies with part 15 of the FCC rules. Operation is subject to the following two conditions.

(1) This device may not cause harmful interference and (2) this device must accept any interference received, including interference that may cause undesired operation.

Network Requirements

- One RJ-11 ADSL line broadband Internet connection
- PC with a 10/100Mbps Ethernet card/adaptor installed or PC with a USB port
- TCP/IP Network protocol installed on each PC
- Internet Explorer 4.0 and higher or Netscape Navigator 4.0 and higher

Step 4 Device Configuration

1. Launch your PC web browser and enter the URL: ***http://192.168.1.1*** (Figure 3)



Figure 3

- Please wait for the ***SETUP*** page to appear (Figure 4).

Figure 4

2. Enter a desired ***User Name*** and ***Password***.
3. Re-enter the password to authenticate its use.
4. Click the ***Save*** button to save the configuration to your ADSL device.
5. You can now start browsing the web through the ADSL device.
6. Once you change your device password, you are prompted to enter the ***User Name*** onto the ***Enter Network Password*** pop-up window to authenticate the change.

NOTE: For more complete information on the device, please see the full manual which is included on the CD

Step 3 Software Installation

3.1 USB Driver Installation for Windows 98SE/ME/2000/XP

NOTE: If you do not plan to use the USB interface, then skip to the next section titled "**About TCP/IP**".

Please follow the steps below to ensure a successful USB installation:

WARNING: Do not plug the USB cable into the PC from Telindus ADSL 1110 Bridge until after you finish the USB driver installation.

1. Insert the included Telindus CD into your CD-ROM drive.
2. Run **USB Setup.exe** file under the USB driver folder in the CD ROM.
3. Follow the instruction to install the USB driver properly.
4. Once you finish installing, it is necessary for you to close **ALL** applications that you are currently running before rebooting your PC.

3.2 About TCP/IP

You must install the TCP/IP network protocol (Figure 2) on each workstation on your LAN so they can communicate with the device. Make sure that each PC on your LAN has TCP/IP available. Your TCP/IP configuration is solely based on your ISP's setup.

Please consult your ISP for TCP/IP setup.

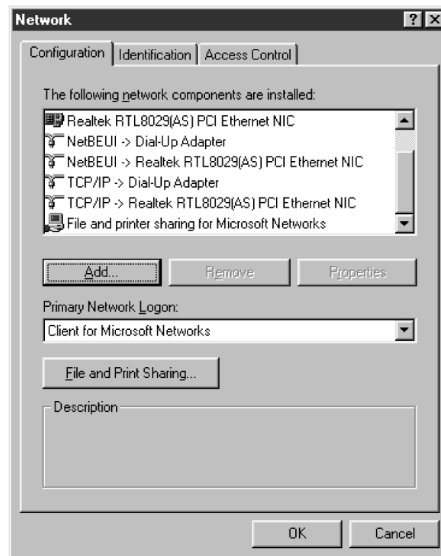


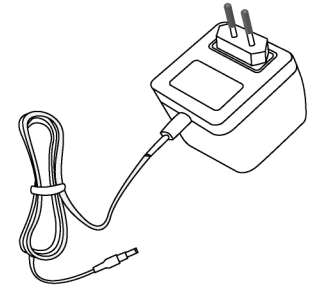
Figure 2

Continue next page

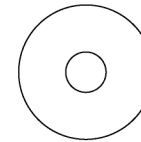
Step 1 Unpack Your Box



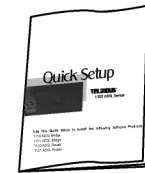
Telindus
ADSL Device



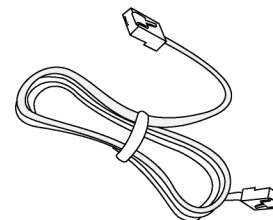
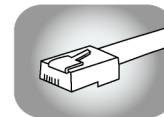
13.5V 1A AC Power Adapter



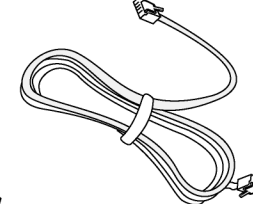
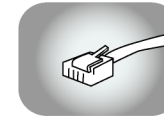
CD ROM



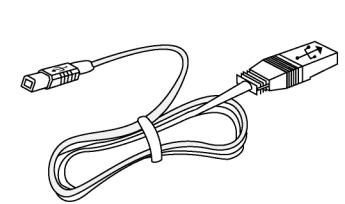
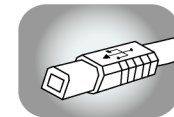
Quick Setup



Ethernet Cable



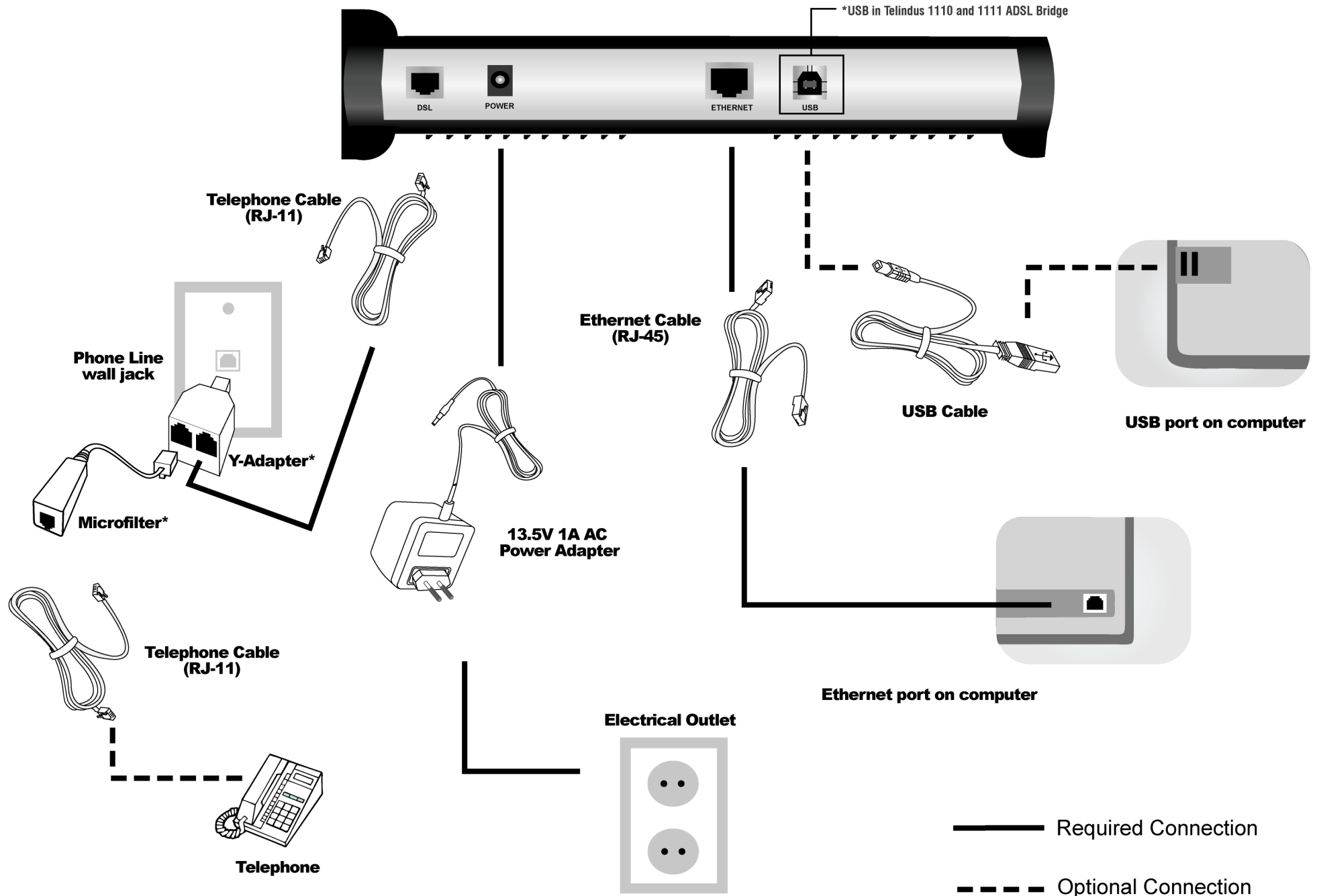
Telephone Cable



USB Cable*

*USB cable available for 1110 and 1111 ADSL Bridge

Step 2 *Connect Hardware*



*Microfilter and Y-Adapter are optional accessories. Please check with your ISP.